

- In addition to routine checks for each use, PPE should regularly undergo a detailed inspection by a competent person. Petzl recommends an inspection every 12 months and after any exceptional event in the life of the product.
  - PPE inspection should be conducted with the manufacturer's Instructions for Use.
- Download the instructions at [PETZL.COM](https://www.petzl.com).



## ANCHOR STRAPS

### 1. Known product history

Any PPE showing unexpected degradation should be quarantined, pending a detailed inspection.

The user should:

- Provide precise information on the usage conditions.
- Report any exceptional event regarding his PPE.

(Examples: fall or fall arrest, use or storage at extreme temperatures, modification outside manufacturer's facilities...).

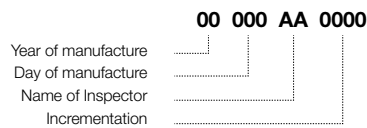


### 2. Preliminary observations

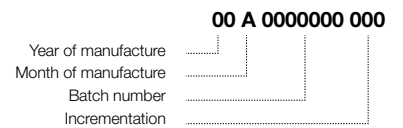
Verify the presence and legibility of the serial number and the CE mark.

**Attention**, the serial number code on our products is evolving. Two types of code will coexist. See below for details on each serial number code.

Code A:



Code B:

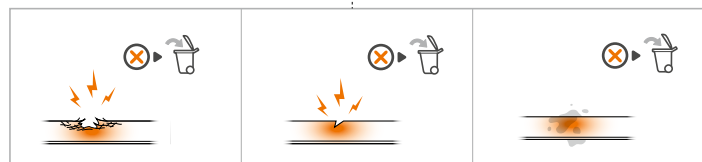
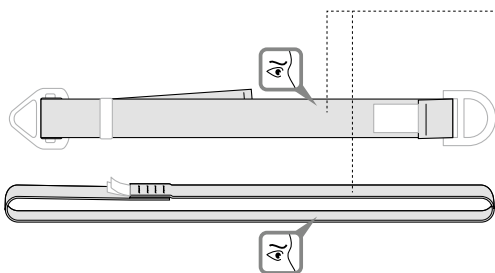


Verify that the product lifetime has not been exceeded.

Compare with a new product to verify there are no modifications or missing parts.

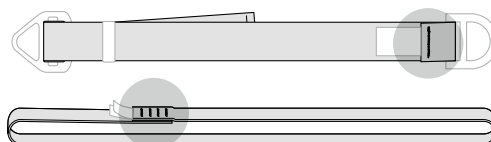
### 3. Checking the condition of the strap

- Check the condition of the strap along its entire length: look for cuts, wear and damage due to use, to heat, to chemicals... Be particularly careful to check for cut fibers.



etc...

- Check the condition of the safety stitching on both sides. Look for any threads that are loose, worn, or cut.

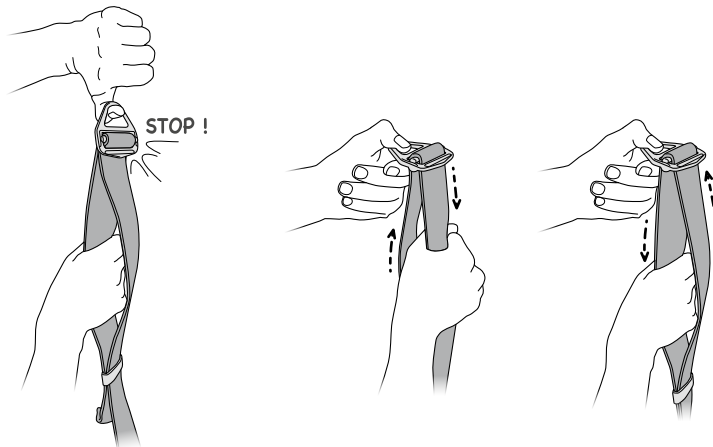


#### 4. Checking the attachment points and adjustment buckle (depending on the model)

- Check the condition of the attachment points and of the adjustment buckle: marks, cracks, wear, deformation, corrosion...

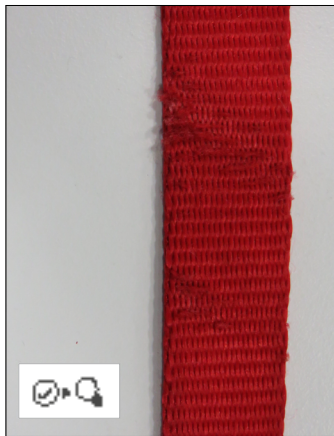


- Verify that the adjustment buckle operates properly.

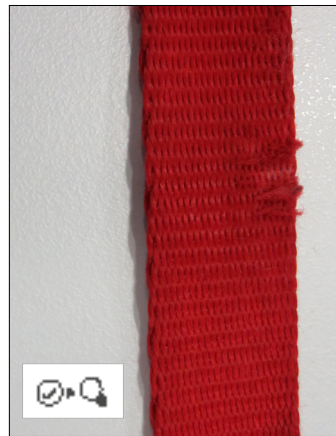


#### 5. Appendix: examples of straps that are worn out, or that should be retired

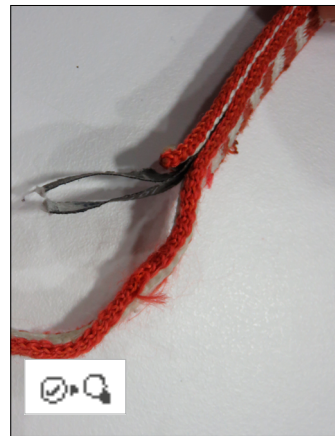
- Frayed webbing



- Frayed webbing



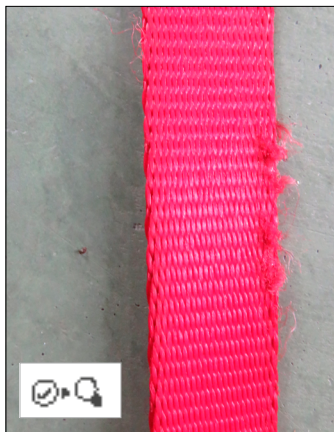
- Cut threads



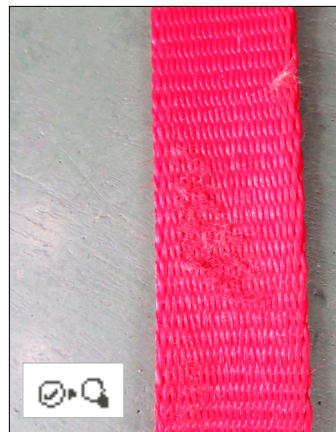
- Frayed webbing



- Frayed webbing



- Fuzzy area



- Fuzzy area

